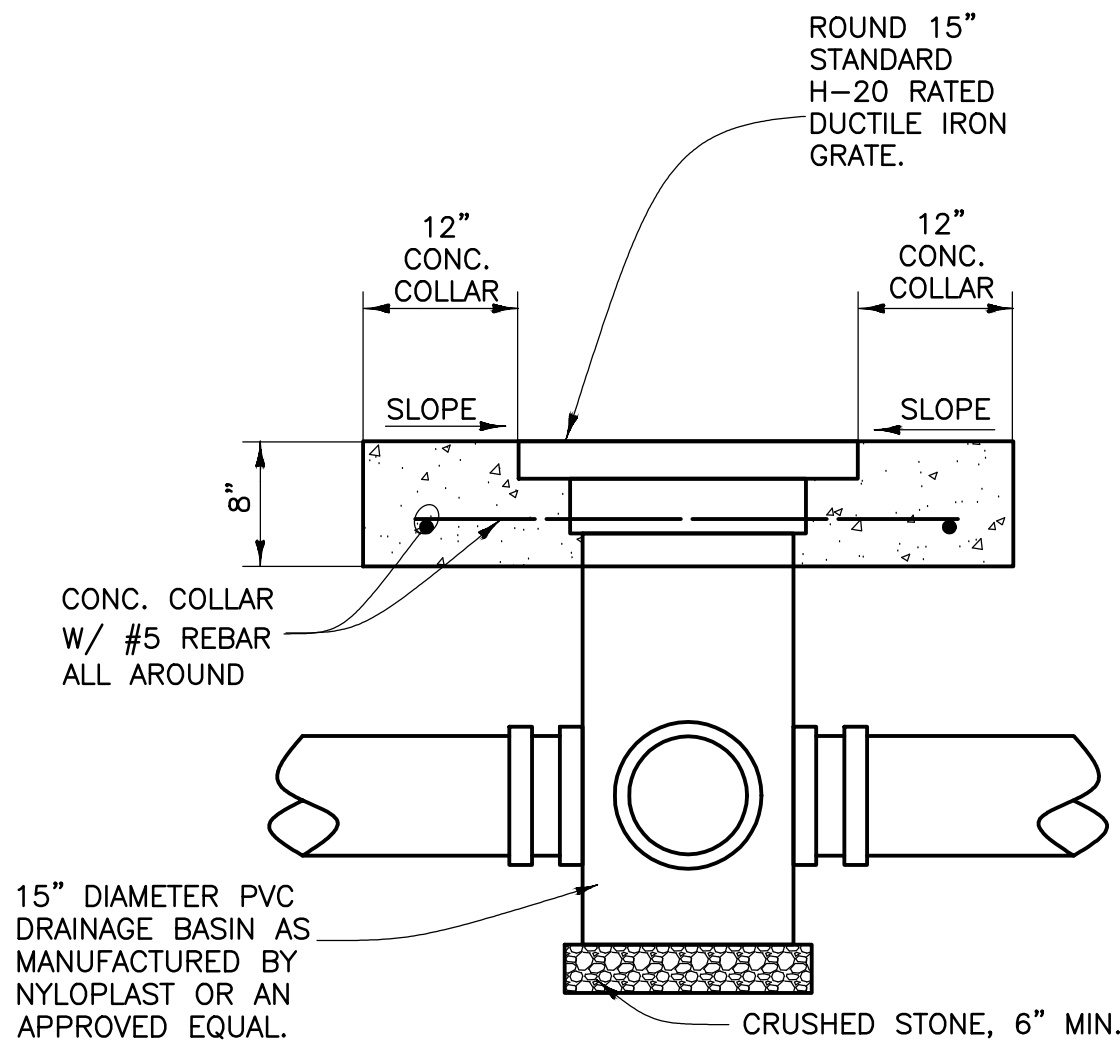
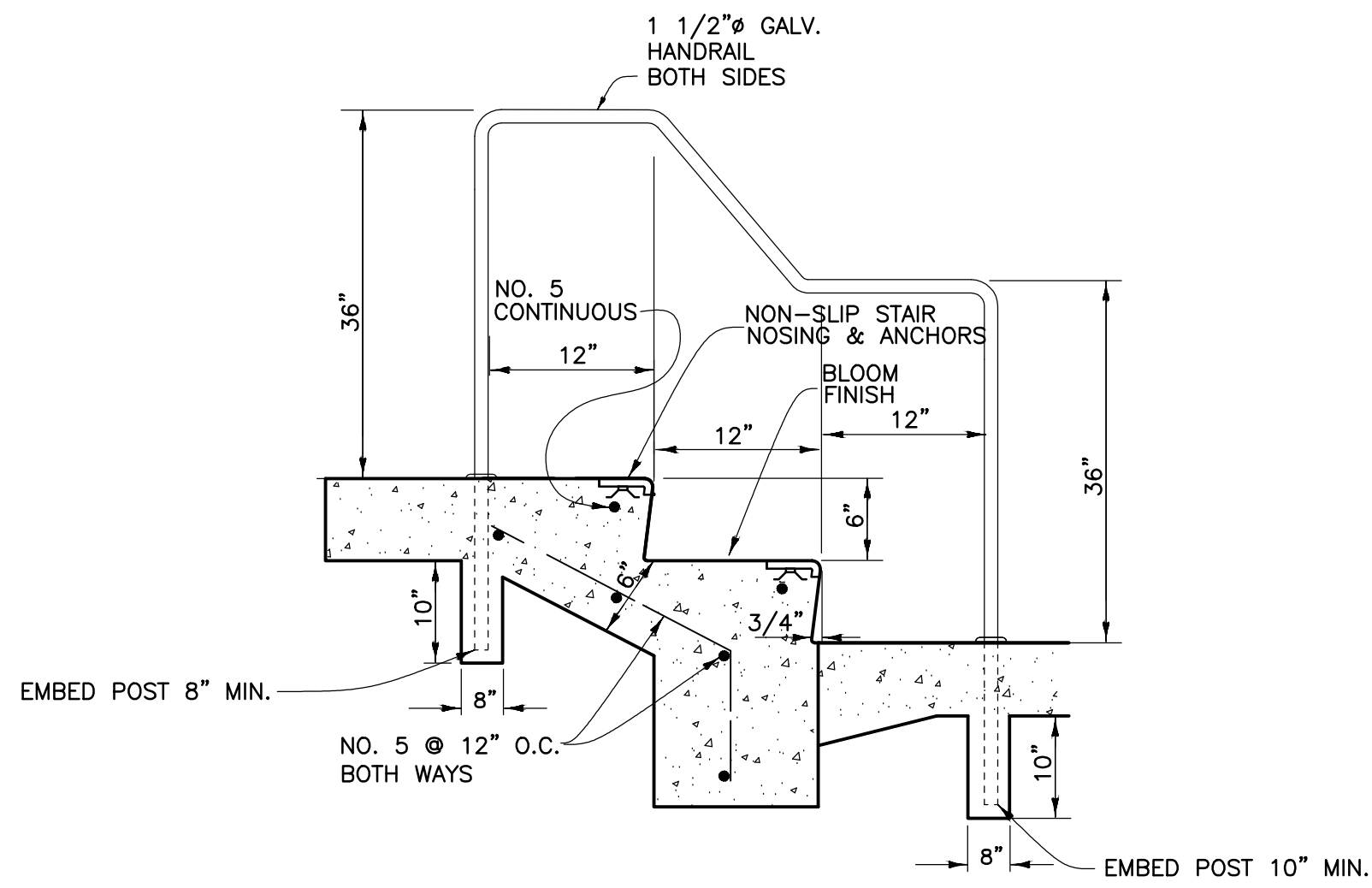


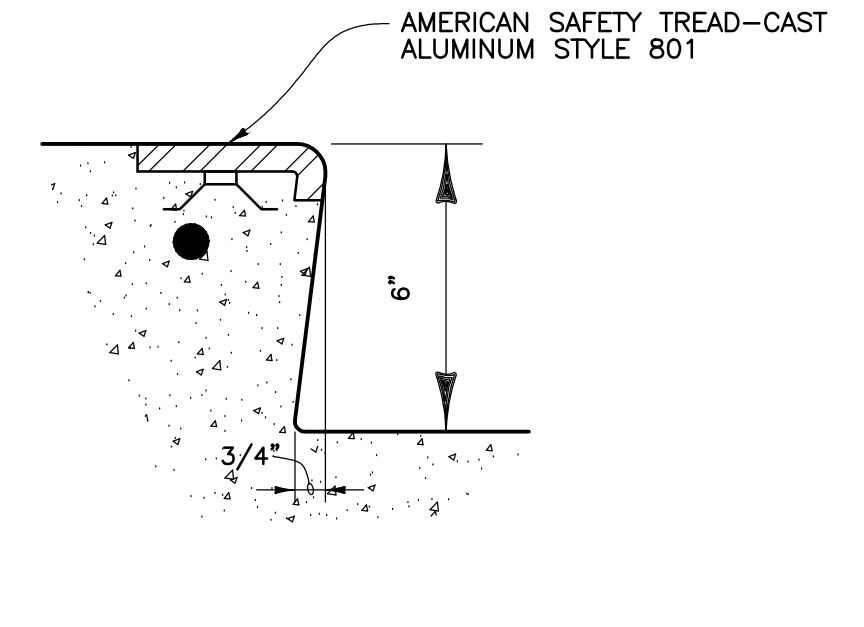
1 YARD GRATE INLET DETAIL
C3.02 N.T.S.



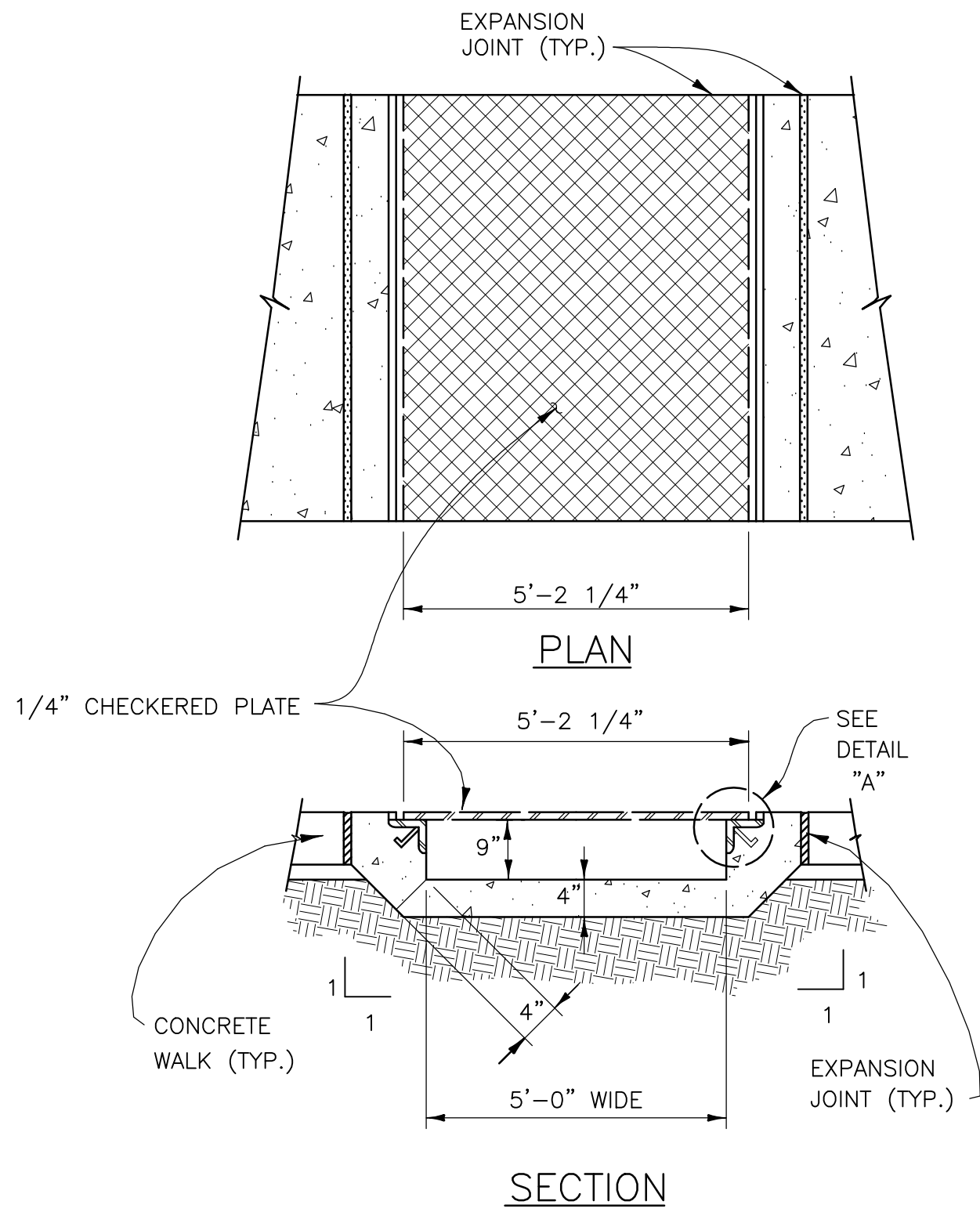
2 15" DRAINAGE BASIN DETAIL
C3.02 N.T.S.



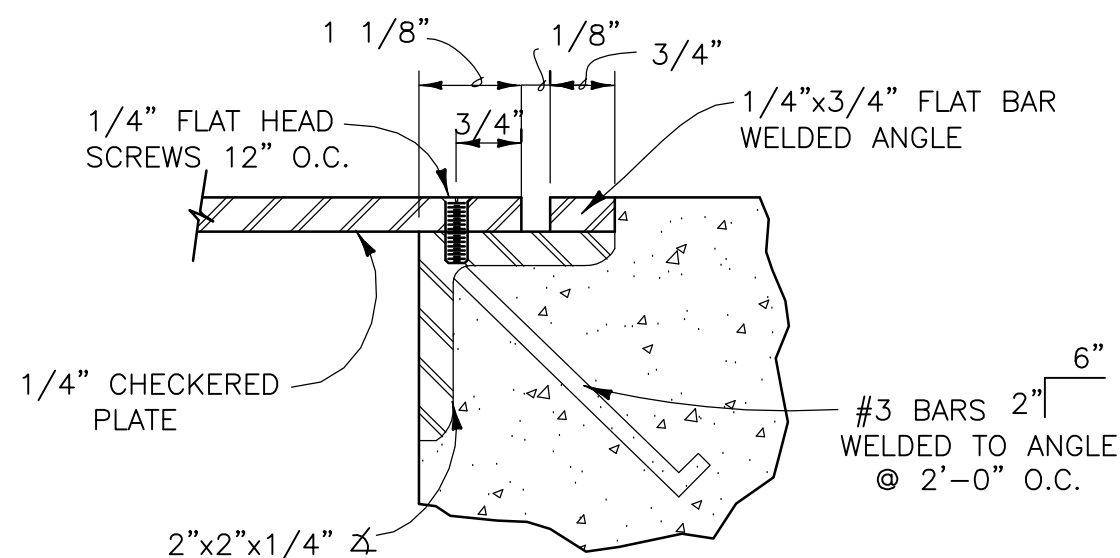
3 STAIR SECTION
C3.02 N.T.S.



RISER DETAIL

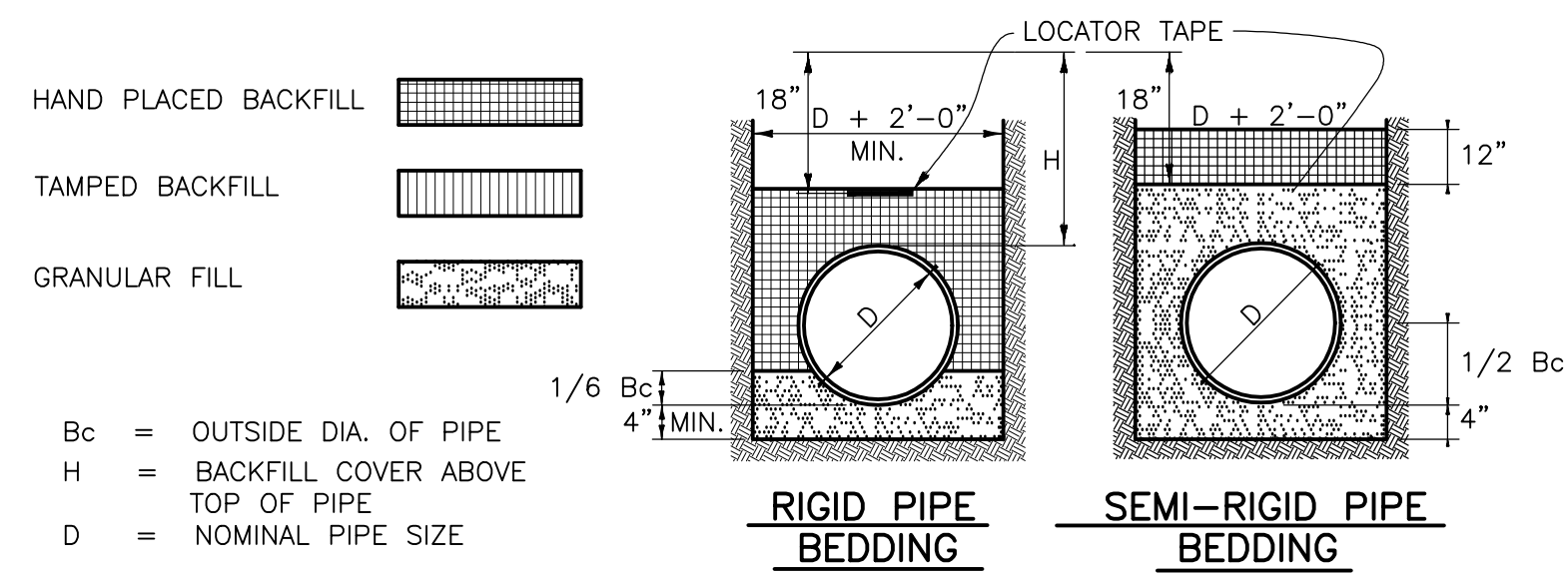


4 SIDEWALK DRAIN DETAIL
C3.02 N.T.S.



NOTE: ALL METAL PARTS TO BE HOT DIP GALVANIZED AFTER FABRICATION.

DETAIL "A"



NOTES: GRANULAR FILL TO BE CRUSHED STONE WITH NOT LESS THAN 95% PASSING 1/2" AND NOT LESS THAN 95% TO BE RETAINED ON A #4 TO BE PLACED IN NOT MORE THAN 6" LAYERS AND COMPACTED TO 90% MAX. DENSITY ACCORDING TO ASTM D 1557. TAMPED BACKFILL SHALL BE FINELY DIVIDED JOB EXCAVATED MATERIAL FREE FROM DEBRIS, ORGANIC MATERIAL AND STONES COMPACTED TO 95% MAXIMUM DENSITY AS DETERMINED BY ASTM D 1557. GRANULAR FILL MAY BE SUBSTITUTED FOR ALL OR PART OF TAMPED BACKFILL. HAND PLACED BACKFILL SHALL BE FINELY DIVIDED MATERIAL FREE FROM DEBRIS AND STONE. ALL PIPE, UNDER PAVEMENT OR STRUCTURES, RIGID OR SEMI-RIGID, SHALL BE COMPACTED FULL DEPTH. TRENCH EXCAVATION PER OSHA REGULATIONS.

TRENCH AND PIPE EMBEDMENT DETAILS
N.T.S.

TBA STUDIO
ARCHITECTURE
103 Cypress Street
West Monroe, LA 71291
Tel. 318.340.1550
Fax. 318.998.1315
www.tbastudio.com

TBA

SCHOOL OF CONSTRUCTION PRACTICE
LAB BUILDING, UNIVERSITY OF
LOUISIANA MONROE

507 Filhiol Ave, Monroe, LA 71203

DRAWING REVISIONS

No.	Description	Date

DRAWN BY: ADF
CHECKED BY: MWS
SHEET

C3.02

CONSULTING ENGINEERS
3003 KNIGHT STREET, SUITE 120
SHREVEPORT, LOUISIANA 71105
phone: 318-425-7452 fax: 318-425-4022
www.AFJMc.com

ENGINEER: MARK W. SNOW, P.E.
LICENSE NO. 24203

Date: NOV 2025
Project No.: 24-0059
File Name:
DESCRIPTION: DRAINAGE AND UTILITY DETAILS